

Architectural High Performance LED Projector

The PROJEKTOR B225 and B228 fixture is an IP65 rated luminaire that is suitable for both exterior use as well as for large public interior applications. The compact design makes it perfect for building facades, landscaping, entrances, security areas, terraces and gardens.

Available in 3 different light distributions with a highly specular reflector with wide, medium and narrow beam characteristics. The fitting is constructed with the LED and driver compartment with built-in (IP67) driver thermally separated in a surface powder coated die-cast aluminium housing for optimum reliability.

With LED engines of 35 W and 55 W, and a luminous flux between 4150 lm and 6000 lm.

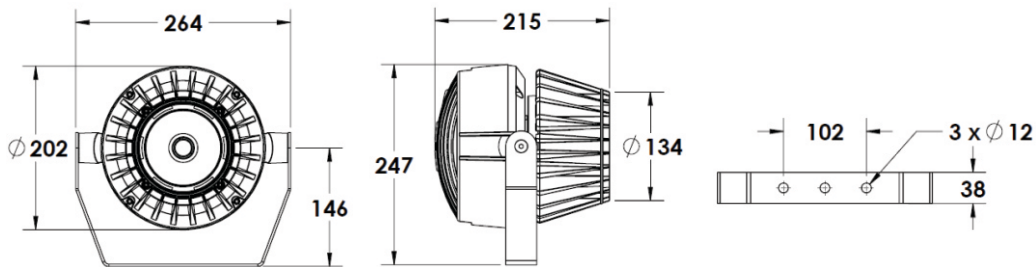
- Line voltage luminaire for 120 to 277V
- 15°, 23°, or 46° axially symmetrical light distribution
- Available in 2700K, 3000K, 3500K, 4000K and 5000K to 3-Step MacAdam ellipse Chromaticity Control Standard.
- 35 watts and 55 watts total power consumption
- Over 6,000 delivered lumens with the 5000K, 46° optic
- Sustainable fixture designed for ease of maintenance
- Adjustable corrosion resistant stirrup (included), stylish cast mounted stirrup optional
- Lumen maintenance L70 @ 25°C - 50,000 hrs
- Lumen measurements comply with LM - 79 - 08 standard
2 year warranty

Specifications

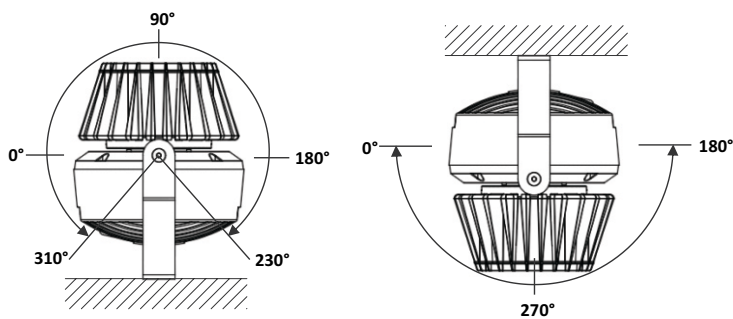
Light Source	Citizen COB LED
Correlated Colour Temperature (CCT)	2700K, 3000K, 3500K, 4000K & 5000K
Colour Rendering Index (Ra)	85 typical, High > 90 Ra optional
Beam Angles	15°, 23°, 46°
Luminous lux	4150lm (35W) and 6000lm (55W)
Power requirement;	100~277V AC 50~60Hz
Power Consumption	35W & 55W
Material	Die cast aluminium housing powder coated with tempered lens
Ingress Protection	IP65
Weight	4.2 kg
Operating Temperatures	-25° C to 50° C
Lifetime	50,000 hours, 70% lumen maintenance at Ta=45°C
Warranty	2-year system warranty

Mounting Options

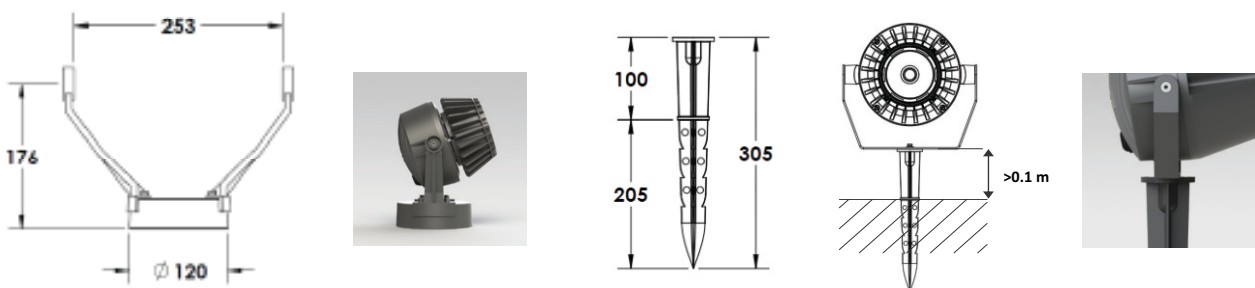
Dimensions



Adjustable Pivot



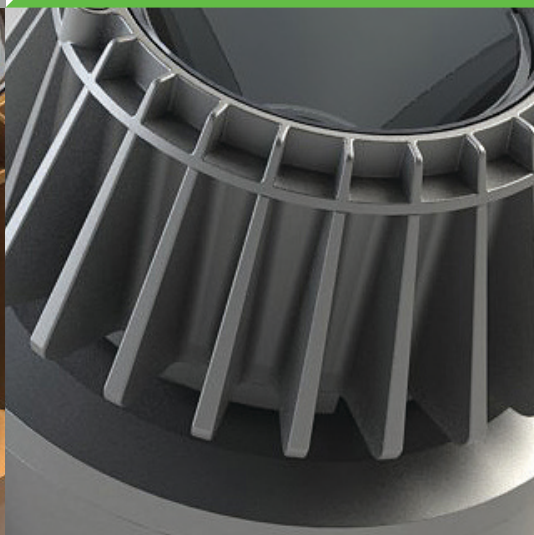
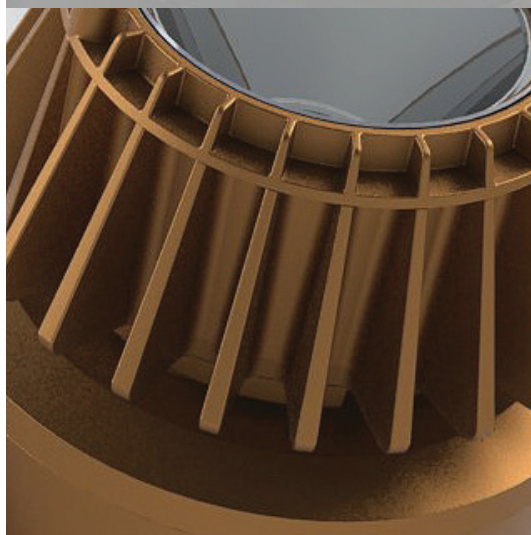
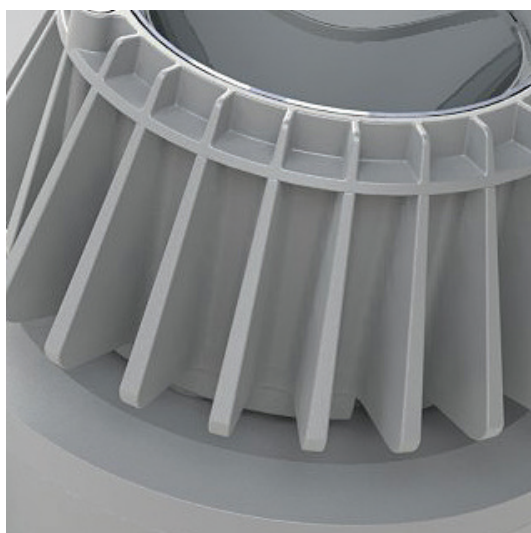
Mounting Accessories



Cast Stirrup

Ground Stake

Additional Colour Options



Order Information

Product Family	Light Source	Power Rating	Colour Temperature CCT	Beam Angle	Colour Finish
PJL03	1K	—	—	R__	__—

Key

Power Rating	'7' = 35W	'8' = 55W	
Colour	'X' = 2700K	'N' = 4000K	'Z' = 3500K
	'W' = 3000K	'D' = 5000K	
Beam Angle	15°	23°	46°
Colour Finish	'01' = white	'02' = black	'03' = silver

Example

PJL03	1K	8	W	R15	02
--------------	-----------	----------	----------	------------	-----------

Product Family: PJL03
Light Source: 1K
Power: 55W
Colour: 3000K
Beam Angle: 15°
Finish: Black