

Architectural High Performance LED Projector

The PROJEKTOR B215 and B218 fixture is an IP65 rated luminaire that is suitable for both exterior use as well as for large public interior applications. The compact design makes it perfect for building facades, landscaping, entrances, security areas, terraces and gardens.

Available in 4 different light distributions with a highly specular reflector with very wide, wide, medium and narrow beam characteristics. The fitting is constructed with the LED and driver compartment with built-in (IP67) driver thermally separated in a surface powder coated die-cast aluminium housing for optimum reliability.

With LED engines of 14W and 25W, and a luminous lux between 868 lm and 1973 lm and a photometric performance capable of at least 20 lux at a distance of 30m.

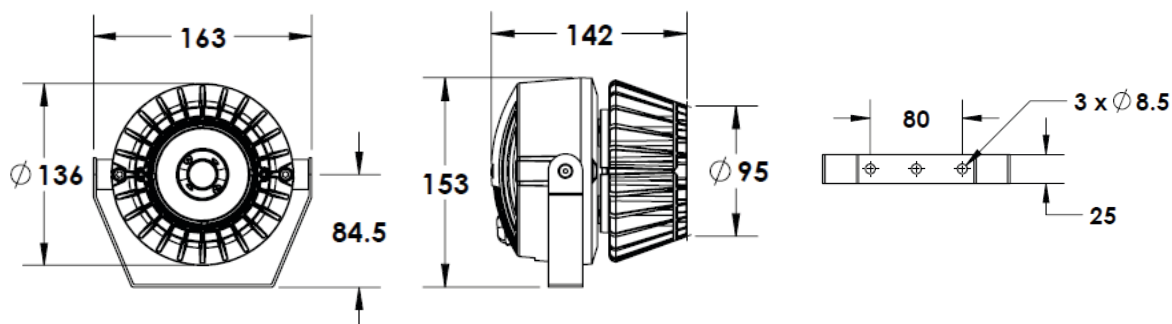
- Line voltage luminaire for 120 to 277V
- 18°, 30°, 55° or 73° axially symmetrical light distribution
- Available in 2700K, 3000K, 3500K, 4000K and 5000K to 3-Step MacAdam ellipse Chromaticity Control Standard.
- 14 watts and 25 watts total power consumption
- 1973 delivered lumens with the 5000K, 73° optic
- Minimum 20 lux @ 30m distance (5000K, 18° optic, 25W)
- Sustainable fixture designed for ease of maintenance
- Adjustable corrosion resistant stirrup (included), stylish cast mounted stirrup options
- Lumen maintenance L70 @ 25°C - 50,000 hrs
- Lumen measurements comply with LM - 79 - 08 standard
2 year warranty

Specifications

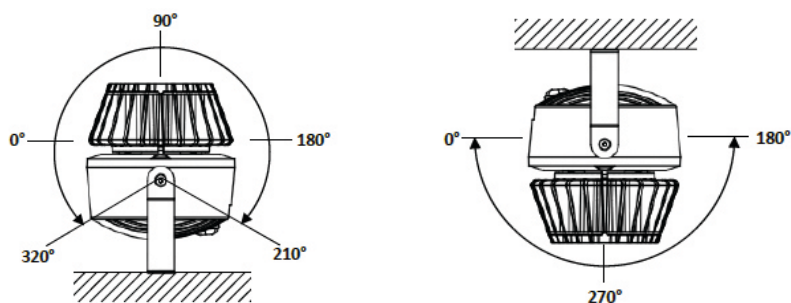
Light Source	Citizen COB LED
Correlated Colour Temperature (CCT)	2700K, 3000K, 3500K, 4000K & 5000K
Colour Rendering Index (Ra)	85 typical, High > 90 Ra optional
Beam Angles	18°, 30°, 55°, 73°
Luminous lux	1246lm (14W) and 1973lm (25W)
Power requirement;	100~277V AC 50~60Hz
Power Consumption	14W & 25W
Material	Die cast aluminium housing powder coated with tempered lens
Ingress Protection	IP65
Weight	1.5 kg
Operating Temperatures	-25° C to 50° C
Lifetime	25,000 hours, 70% lumen maintenance at Ta=45°C
Warranty	2-year system warranty

Mounting Options

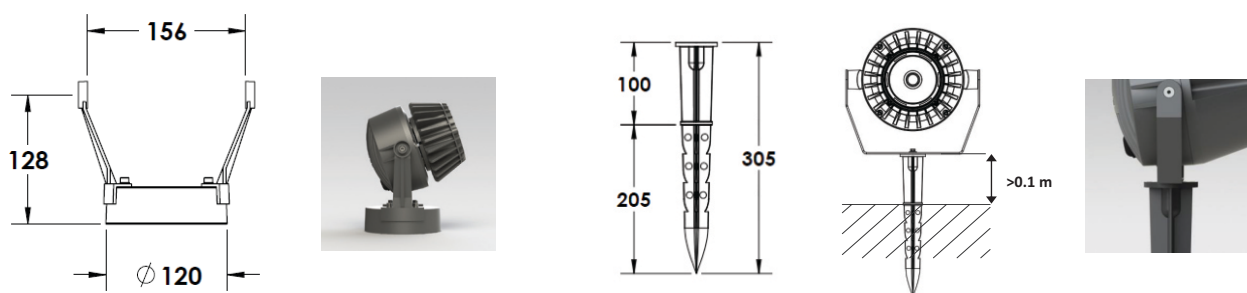
Dimensions



Adjustable Pivot



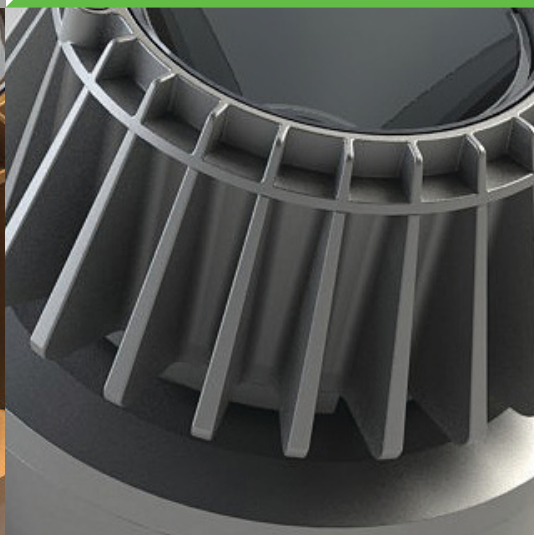
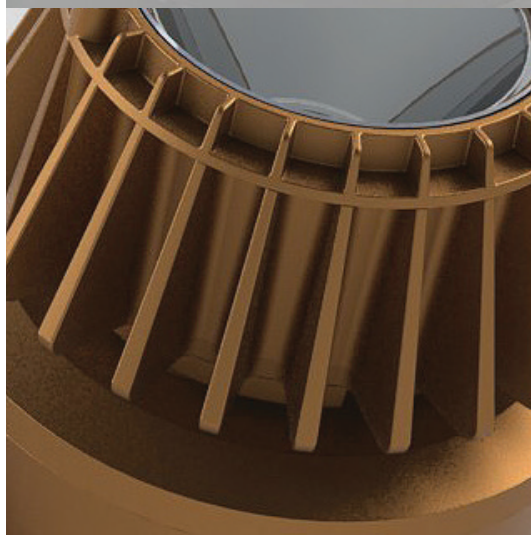
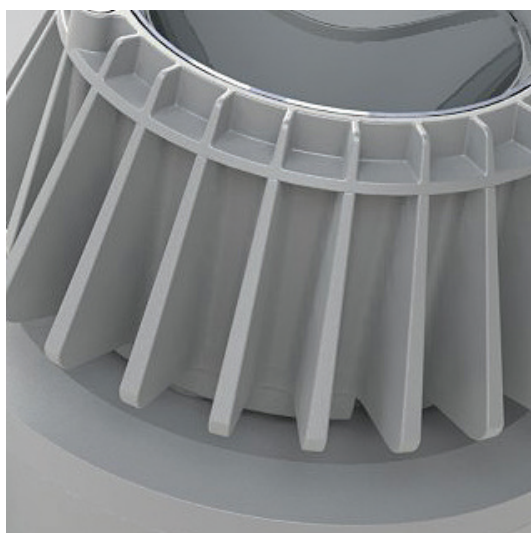
Mounting Accessories



Cast Stirrup

Ground Stake

Additional Colour Options



Order Information

Product Family	Light Source	Power Rating	Colour Temperature CCT	Beam Angle	Colour Finish
PJL02	1K	—	—	R —	— —

Key

Power Rating	'5' = 14W	'6' = 25W		
Colour	'X' = 2700K	'N' = 4000K	'Z' = 3500K	
	'W' = 3000K	'D' = 5000K		
Beam Angle	18°	30°	55°	73°
Colour Finish	'01' = white	'02' = black	'03' = silver	

Example

PJL02	1K	6	D	R30	02
--------------	-----------	----------	----------	------------	-----------

Product Family: PJL02
Light Source: 1K
Power: 25W
Colour: 5000K
Beam Angle: 30°
Finish: Black