

## **Architectural High Performance LED Projector**

The COMET C248 and C255 fixture is an IP65 rated luminaire that is suitable for exterior use for large area lighting. Perfect for use on tall buildings and other structures. Its strong construction makes it perfect for heavy duty installations and public areas where protection is required.

Available in 3 different light distributions with a highly specular reflector with wide, medium and narrow beam characteristics. The fitting is constructed with the LED and driver compartment with built-in (IP67) driver thermally separated in a surface powder coated die-cast aluminium housing for optimum reliability.

With LED engines of 55W and 75W, and a luminous lux between 5660 lm and 7670 lm. 0-10 volt dimming options are also available.

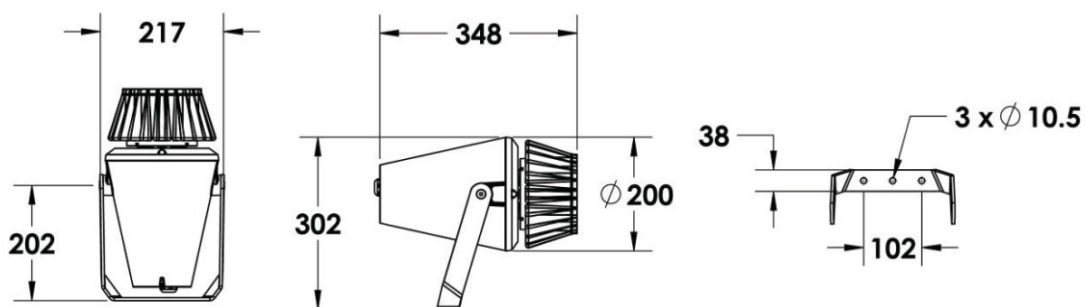
- Line voltage luminaire for 120V to 277V
- 15°, 23°, or 46° axially symmetrical light distribution
- Available in 2700K, 3000K, 3500K, 4000K and 5000K to 3-Step MacAdam ellipse Chromaticity Control Standard.
- 55 watts and 75 watts total power consumption
- Over 7000 lumens with the 5000K, 43deg optic
- Sustainable fixture designed for ease of maintenance
- Adjustable corrosion resistant stirrup (included), stylish cast mounted stirrup options
- Lumen maintenance L70 @ 25°C - 50,000 hrs
- Lumen measurements comply with LM - 79 - 08 standard  
2 year warranty

## Specifications

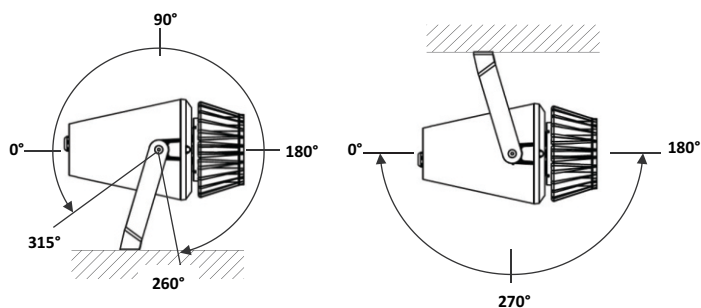
Light Source	Citizen COB LED
Correlated Colour Temperature (CCT)	2700K, 3000K, 3500K, 4000K & 5000K
Colour Rendering Index (Ra)	85 typical, High > 90 Ra optional
Beam Angles	15°, 23° or 46°
Luminous lux	7670 lm (75W), 5650 lm (55W)
Power requirement;	100~277V AC 50~60Hz
Power Consumption	55W and 75W
Material	Die cast aluminium housing powder coated with tempered tempered lens
Ingress Protection	IP65
Weight	5 kg
Operating Temperatures	-25° C to 50° C
Lifetime	50,000 hours, 70% lumen maintenance at Ta=45°C
Warranty	2-year system warranty

## Mounting Options

### Dimensions



### Adjustable Pivot



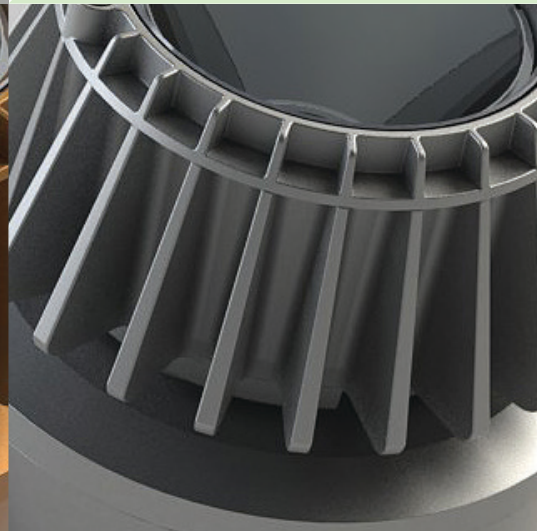
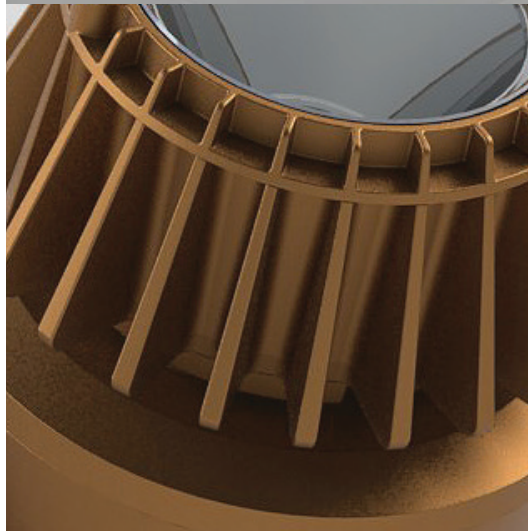
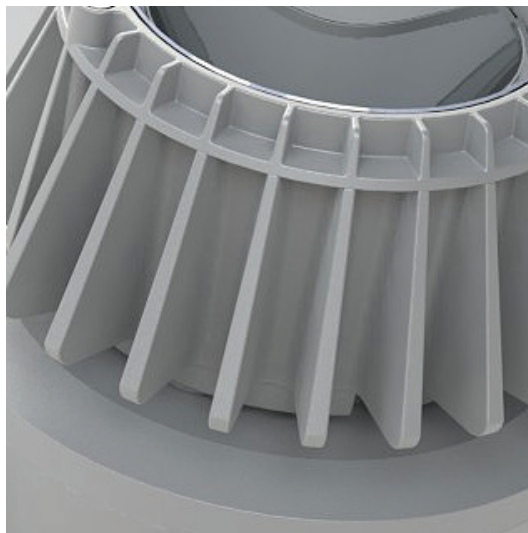
### Mounting Accessories



Ground Stake

Cast Stirrup

## Additional Colour Options



## Order Information

Product Family	Light Source	Power Rating	Colour Temperature CCT	Beam Angle	Colour Finish
PJL04	1K	—	—	R__	__

## Key

<b>Power Rating</b>	'8' = 55W	'9' = 75W	
<b>Colour</b>	'X' = 2700K	'N' = 4000K	'Z' = 3500K
	'W' = 3000K	'D' = 5000K	
<b>Beam Angle</b>	15°	23°	46°
<b>Colour Finish</b>	'01' = white	'02' = black	'03' = silver

## Example

<b>PJL04</b>	<b>1K</b>	<b>8</b>	<b>D</b>	<b>R15</b>	<b>02</b>
--------------	-----------	----------	----------	------------	-----------

**Product Family:** PJL04  
**Light Source:** 1K  
**Power:** 55W  
**Colour:** 5000K  
**Beam Angle:** 15°  
**Finish:** Black