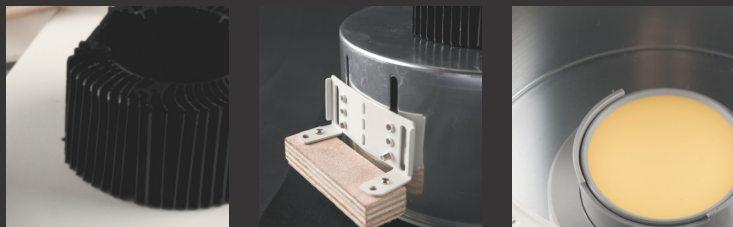




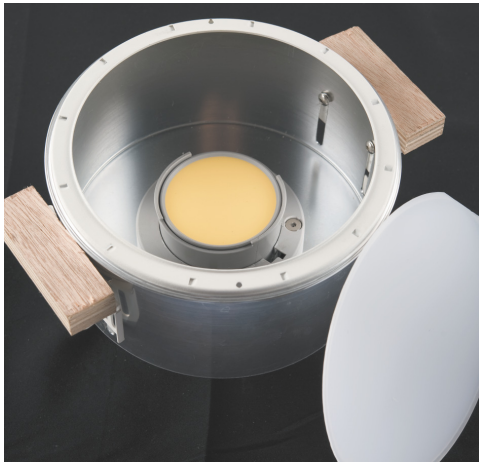
## TRIM-LESS CUTTER LED DOWNLIGHT SERIES



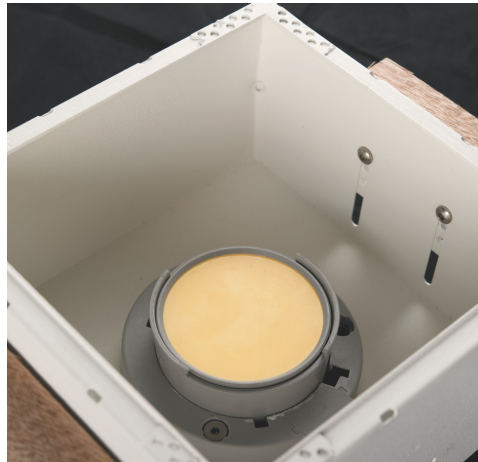
CUTTER Round / Square recessed trim-less downlights disappear into the ceiling allowing for a perfect blend between luminaire and architecture. CUTTER was designed with the concept of experiencing general light in an environment to appear like natural light emitting from either a square or round shape. Various shapes and sizes can be used to compliment your design.

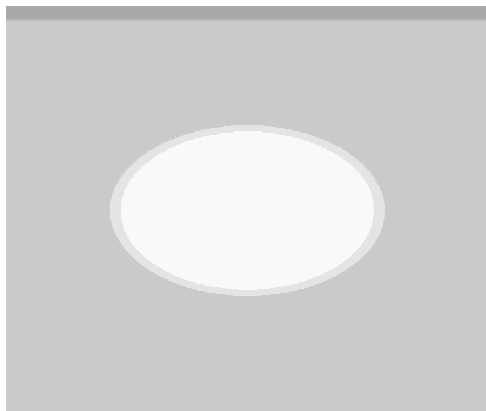


DOWNLIGHT CUTTER ROUND TRIM LESS  
Series PROJECTOR



DOWNLIGHT CUTTER SQUARE TRIM LESS  
Series PROJECTOR

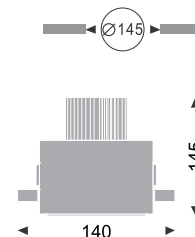




## PHILIPS TWIST LED 1100Lm MAX / TRIDONIC TWIST LED 1100Lm MAX

Body : Die-cast aluminium  
Housing : 0.8mm spinning Aluminium, Bright anodized.  
Safety Cover : Frosted PMMA  
Reflector : 99.98%pure anodised aluminium  
Weight: 0.5 kg

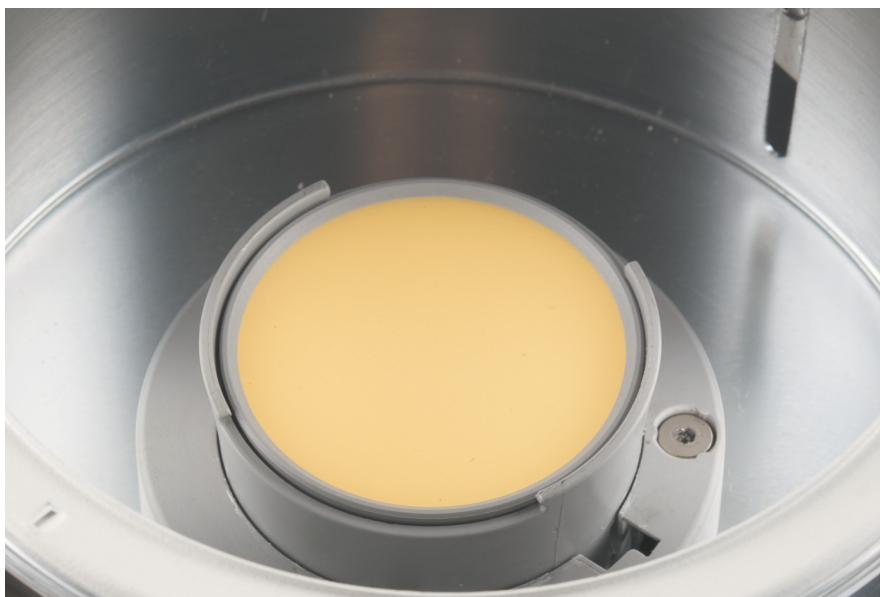
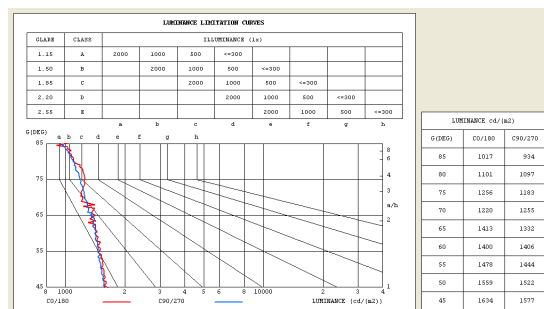
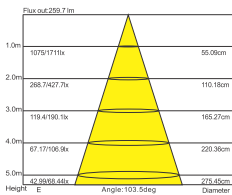
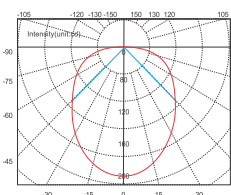
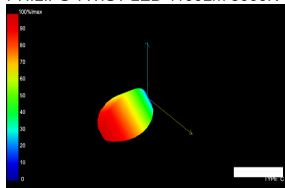
**PHILIPS TRIDONIC**

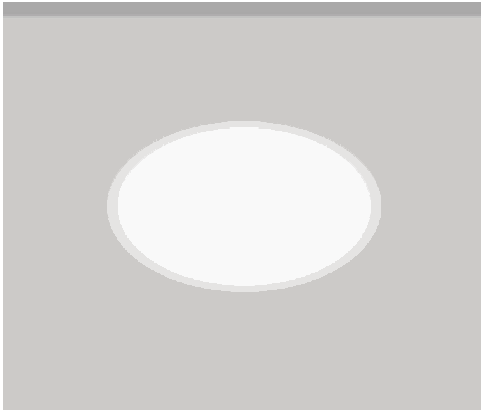


104°  
RCUTL1400-W White  
RCUTL1400-B Black  
RCUTL1400-S Silver



### PHILIPS TWIST LED 1100Lm 3000K

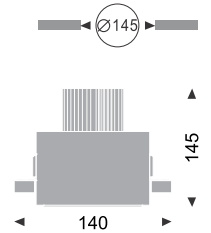
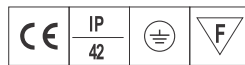




### PHILIPS DLMI LED 1100Lm MAX

Body : Die-cast aluminium  
Housing : 0.8mm spinning Aluminium, Bright anodized.  
Safety Cover : Frosted PMMA  
Reflector : 99.98% pure anodised aluminium  
Weight: 0.5 kg  
Applicable driver sold separately.

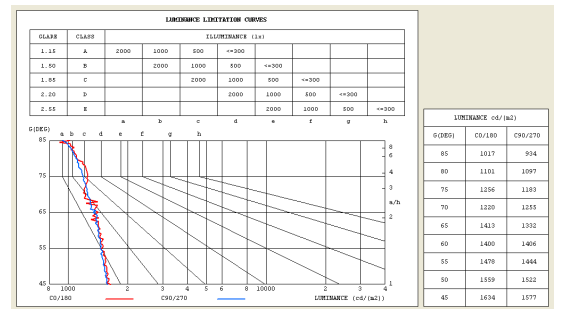
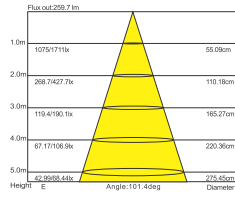
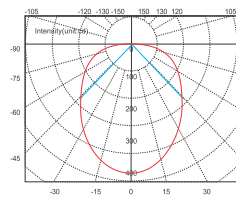
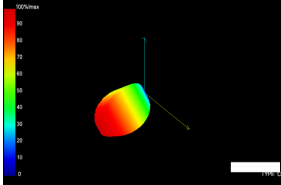
**PHILIPS**



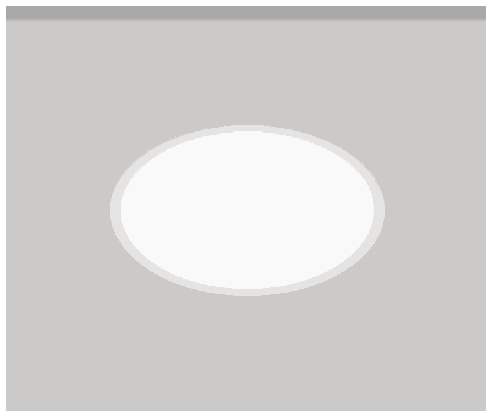
RCUTL1410-W White  
RCUTL1410-B Black  
RCUTL1410-S Silver



### PHILIPS DLMI LED 1100Lm 3000K



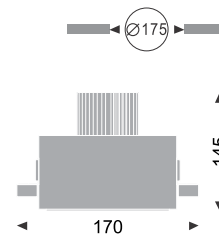




## PHILIPS TWIST LED 1100Lm MAX / TRIDONIC TWIST LED 1100Lm MAX

Body : Die-cast aluminium  
Housing : 0.8mm spinning Aluminium, Bright anodized.  
Safety Cover : Frosted PMMA  
Reflector : 99.98% pure anodised aluminium  
Weight: 0.6 kg  
Applicable driver sold separately.

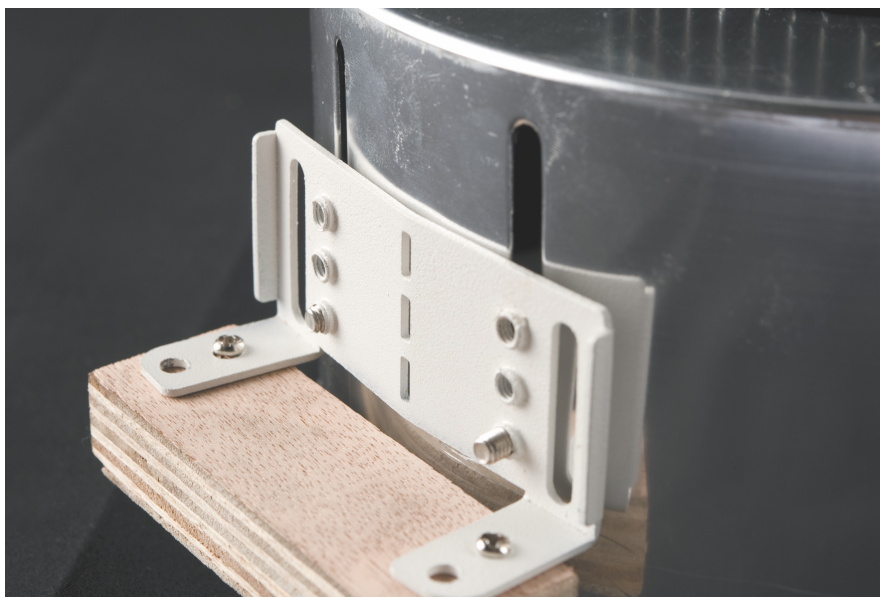
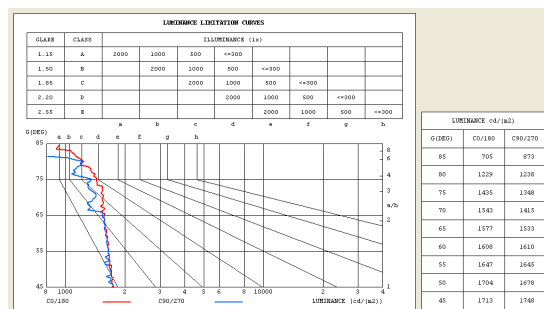
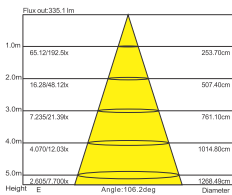
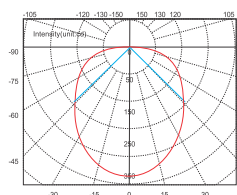
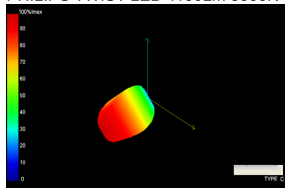
**PHILIPS TRIDONIC**

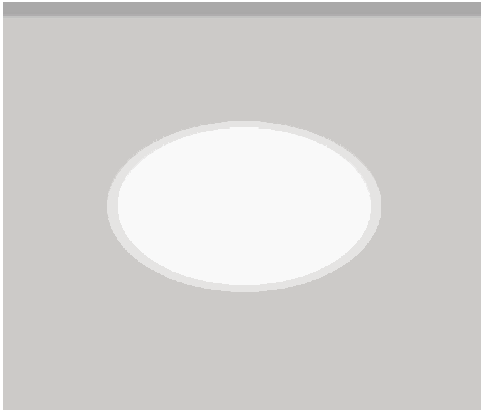


106°  
RCUTL1700-W White  
RCUTL1700-B Black  
RCUTL1700-S Silver



### PHILIPS TWIST LED 1100Lm 3000K

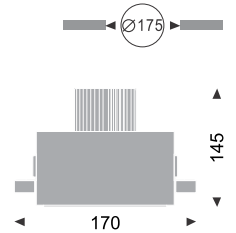
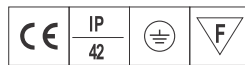




### PHILIPS DLMI LED 2000Lm MAX

Body : Die-cast aluminium  
Housing : 0.8mm spinning Aluminium, Bright anodized.  
Safety Cover : Frosted PMMA  
Reflector : 99.98%pure anodised aluminium  
Weight: 0.6 kg  
Applicable driver sold separately.

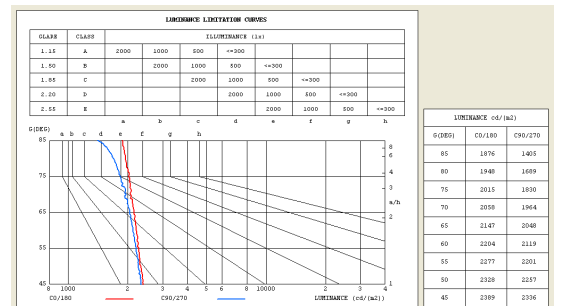
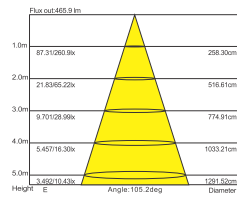
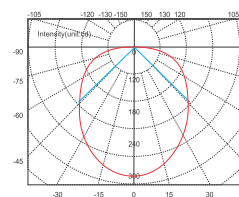
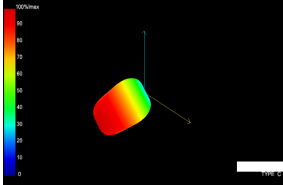
**PHILIPS**

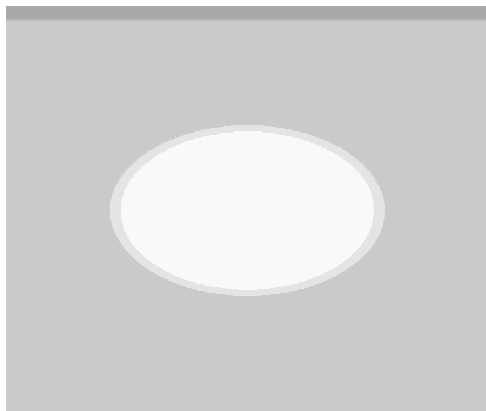


RCUTL1710-W White  
RCUTL1710-B Black  
RCUTL1710-S Silver



### PHILIPS DLMI LED 1100Lm 3000K

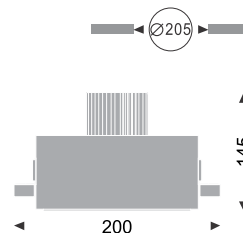




## PHILIPS TWIST LED 1100Lm MAX / TRIDONIC TWIST LED 1100Lm MAX

Body : Die-cast aluminium  
Housing : 0.8mm spinning Aluminium, Bright anodized.  
Safety Cover : Frosted PMMA  
Reflector : 99.98%pure anodised aluminium  
Weight: 0.7 kg

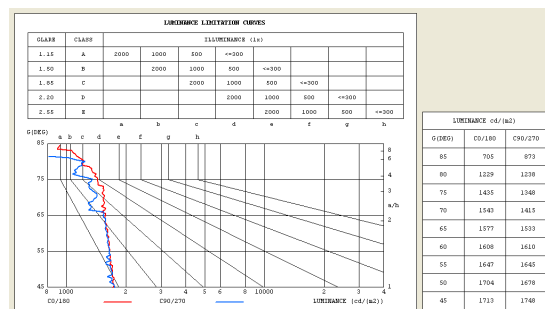
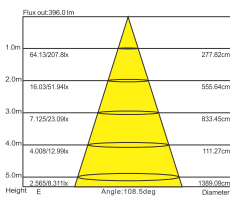
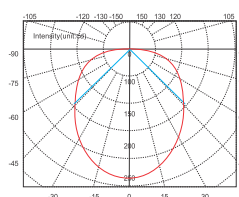
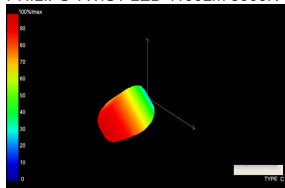
PHILIPS TRIDONIC

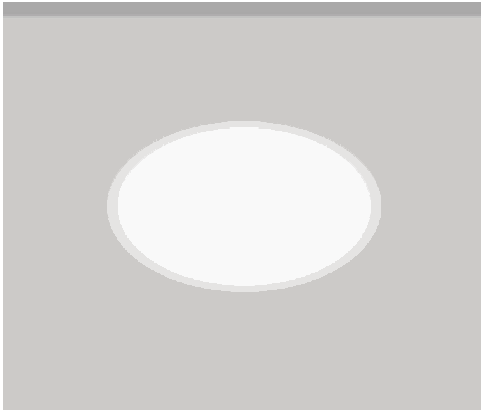


109°  
RCUTL2000-W White  
RCUTL2000-B Black  
RCUTL2000-S Silver



PHILIPS TWIST LED 1100Lm 3000K

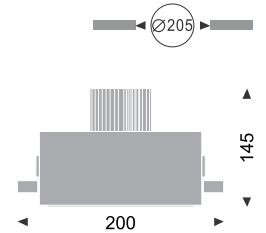
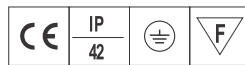




### PHILIPS DLMI LED 2000Lm MAX

Body : Die-cast aluminium  
Housing : 0.8mm spinning Aluminium, Bright anodized.  
Safety Cover : Frosted PMMA  
Reflector : 99.98% pure anodised aluminium  
Weight: 0.7 kg  
Applicable driver sold separately.

**PHILIPS**



RCUTL2010-W White  
RCUTL2010-B Black  
RCUTL2010-S Silver



### PHILIPS DLMI LED 1100Lm 3000K

